



Purbanchal University Job Central

Strategic Plan
Purbanchal University
2017-2021

Letter from Vice-Chancellor



We understand that Universities ultimate goal is to make a graduate achieve his/her goals and make him/her an able citizen of the world. Students join our University with a dream to be successful in his/her career, and that becomes our duty to fulfill his/her dream. We at Purbanchal University will take this task to direct us in our way of work. Be in the program we offer, curriculum we develop, pedagogy we apply, school we run, we will always keep students dream and their goal to guide us.

We feel happy to place a comprehensive strategy called Purbanchal University Job Central, which will put a framework in our university with which we will achieve our employability goal. Our team at University will always strive for achieving goals as we plan for the university and work according to strategy we develop. I personally thanks Hub4Growth project in injecting the concept of employability in explicit terms and to make us consider employability in terms of strategy and activities of the University. We have placed this aspect in our goals and have allotted budget this fiscal year, this may be small yet in positive direction. This gives me pleasure that we will start working in cohesive way as team in schools and at university level to achieve employability of our students. I believe results will come as we start making progress in various aspect of employability at different levels of university and schools.



We have already started with this journey by creating employability cells at each of the schools and a working office of the enterprise center till infrastructure wise we are in better position.

I wish my team and all stakeholders involved in this strategy of ours, directly and indirectly, with good luck for success. A little success at every level will bring large success at university level.

Let this dream that we have seen today be realized in days to come for betterment of university, students and ultimately of the society.

Sincerely,
Prof. Dr. Ghanshyam Lal Das
Vice-Chancellor
Purbanchal University
Biratnagar, Nepal

Office / Unit Overview

Strategic Vision of PURBANCHAL UNIVERSITY JOB CENTRAL:

Our University will be a place where students get inspiration to dream and we will explore their potential to make them achieve their dream to make world a better place for all.

Strategic Mission of PURBANCHAL UNIVERSITY JOB CENTRAL

Our University will create opportunity for students in acquiring unique knowledge, develop appropriate skills and find ways to progress in chosen career. In the process we will help them realize their dreams and fulfill society's expectation.

Shared Values

We value our students' expectations, professional communities' expectations and employers' expectations. Our work will be guided by value of progressive, quality, equality and inclusiveness.

Strategic Scan

The External Environment

Purbanchal University is situated in eastern region of Nepal which demographically has high level of education, good concentration of industries. With the change in structure of Nepal in the form of federal state, it will bring corporate houses to the region to benefit from federal state incentives. Also the coming of new Education policy for federal Nepal, our university being the only university in this region will get greater role in implementing HE in the state. All these changes in the country will provide many opportunities along with threats which might be new and difficult to tackle.

Opportunities

1. New education policy could give PU bigger role which will give better recognition in the job market.
2. PU will be leader in education in the State no 1 after federal structure as this will be the only university in this region
3. Decentralization in power will create opportunities for university in regional/local level
4. Concentration of industries are high in this region creating lot of job opportunities
5. University adopting employability of graduates as focused area will create a positive environment for attracting better students

Threats

1. New State federal structure is still unclear in terms of ownership of the university.
2. Geographical area of operation of university might be changed creating constraints in revenue generation
3. New education policy might go against the present work of the university, resulting changes in its direction.
4. Students' attraction toward foreign degrees and destination for higher studies.
5. New university may come to exist in federal structure creating competition
6. General political unrest and economic slowdown brings challenges to job opportunity
7. High political interferences in general working of university

The Internal Environment

The PU with around 300 employees is still a small size organization with a definite work culture is bound to grow in terms of employee number and activities in recent future. This situation gives some strength and weakness to university and they are-

Strength

- 1. Good academic programs to attract students. Most of the programs offered in PU are of professional and technical type having demand in the job market**
- 2. Size of the University is manageable which gives strength to be flexible in terms of adaptation of new strategy and programs**
- 3. With a systematic implementation of employability strategy in the university, the university will be poised to take better opportunities in job market**
- 4. Awareness of employability is increasing among the leaders of schools and university which changes to positive outlook toward employability activities**
- 5. Allocation of fund in budget from the fiscal year 2074-75 BS for employability activities in each schools of university**

Weakness

- 1. Funding decrease in university may adversely affect the employability related work**
- 2. Change in leadership may hamper the work related to employability strategy**
- 3. Untrained staff to handle the issue of employability**
- 4. Weak linkage with Industries**
- 5. School more focus on academic work only**
- 6. Unclear authority /lack of authority to leaders at faculty level or school level with respect to employability decisions and activities**

In view of above strengths, weaknesses, opportunities and threats, Purbanchal University has developed strategy PU Job Central to best utilize our strengths, reduce our weakness and take benefits of opportunities and minimize threats impact. This strategy will be reviewed time and again to make additional changes to face the immerging environment.

Strategic Objectives

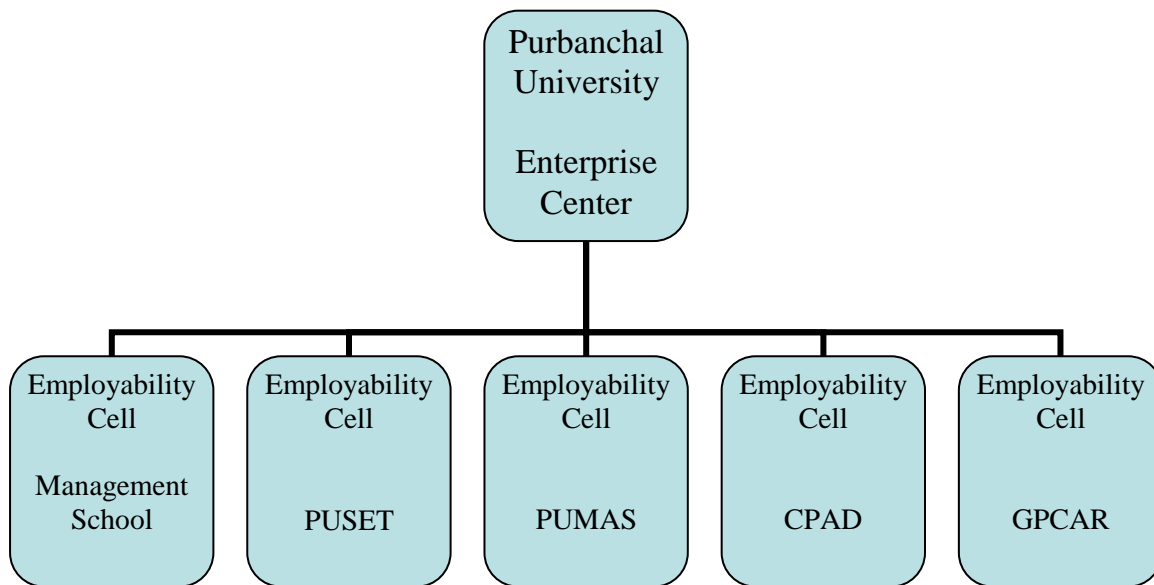
- Create an effective structure of support for enterprise and employability activities in the University by-
 - Establishing employability cell at each of the 5 Colleges
 - Develop functional office of the Enterprise center
 - Establishing of the governance structure of the Enterprise and Employability cell (Staffing and reporting system)
 - Benchmarking the functional activities
 - Establishing an Enterprise Center at University level

- Curriculum upgrading (Ongoing)
 - In tune to market trend
 - To increase students engagement
 - To develop professional and soft skills

- Modifying pedagogy to increase interaction with real situations
- Creating platform for students interaction with professionals/employers/alumina
- Develop database of graduating students centrally
- Reach out Industries, Association and Professional bodies for developing linkage
- Operation of Enterprise Center of PU

Organization Structure

The present structure will be the mode of implementing the PU Job Central strategy.



Resources

Personnel

At present we have five coordinators for employment cell of five schools and a coordinator to run the project and one quality in charge. All of them are permanent faculties of the university.

The plan is to have at 3 people (coordinator and two support staffs) at each employability cell. And a full fledge office of 5 people at enterprise center (One chief, one internal management in-charge, and 3 support staffs).

Finance/ Budget

The Hub4Growth project is financing the present activities. The university has allocated one hundred thousand rupees for each employment cell in schools from this financial year. The university has provided furniture expenses for the office of the project.

The plan is to fully support financially the employment cells and enterprise center by university with independent budget.

Facilities/ equipment

The project office is equipped with four desktop computers, two laptops, one multi-function printer, and office furniture for two people.

Plan is to equip the offices as per the need of the activities.



Purbanchal University Job Central



Read More : www.pujobcentral.org